



# CSC Contribution to LEED v5

## Strengthening Multi-Attribute Performance in Concrete

### About CSC

Founded in 2016, the Concrete Sustainability Council (CSC) is a global certification system for responsible sourcing in the concrete sector. It provides independent, third-party verification across the entire value chain – cement, aggregates, and concrete – assessing key criteria such as environmental performance, resource management, biodiversity, labor practices, and supply chain governance.

 **For more information, visit [www.csc.eco](http://www.csc.eco)**

### LEED v5: A Multi-Attribute Framework

In this new framework, products are evaluated for their ability to address the following sustainability attributes: human health, climate health, ecosystem health, social health & equity, and the circular economy.

The system prioritizes **verified, multi-attribute performance**, rewarding products that contribute across several of these categories.

### MR Credit 4: Building Product Selection & Procurement (BPSP)

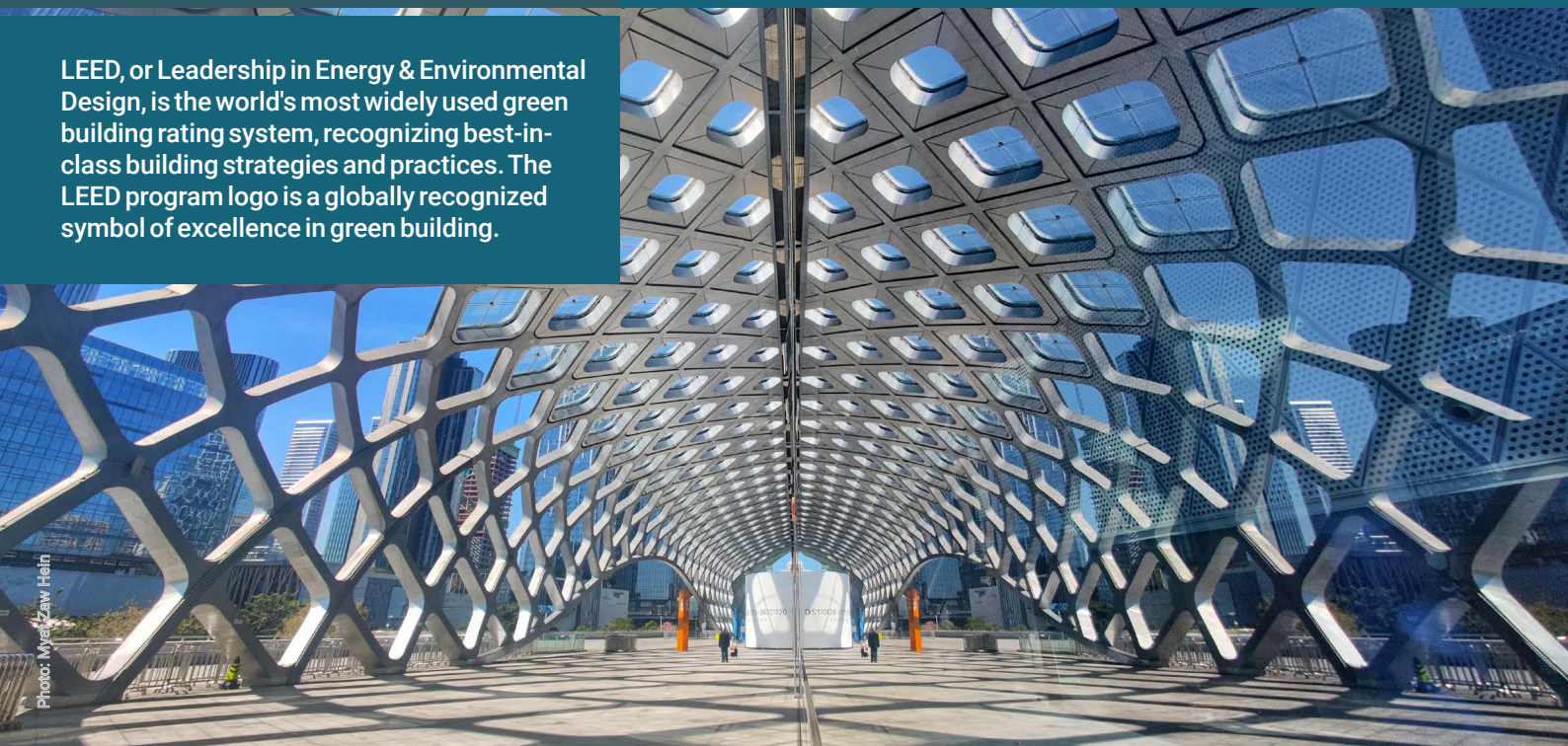
Up to 5 points

MR Credit 4 consolidates key material-related credits from LEED v4/v4.1 into a single framework based on a **Multi-Attribute Score (MAS)**. The intent of this credit is to encourage the use of products and materials that have sustainability documentation that demonstrates environmentally, economically, and socially preferable impacts. This credit rewards the selection of eligible interior and enclosure materials from the following product categories:

- Paints and coatings
- Flooring
- Furniture
- Adhesives and sealants
- Walls
- Composite wood
- Ceilings
- Plumbing fixtures
- Insulation

**Multi-Attribute Score (MAS):** Products with the USGBC-approved certifications or documentation are scored as 1, 2, or 3 for each of the five attributes depending on the level of achievement. These scores are added across each attribute to a maximum MAS score of 5 per product. For example, if a concrete floor is exposed as the finished floor, and the concrete is supplied by a plant with CSC Silver Certification (MAS 2) and CO<sub>2</sub> Module Score of 1 Star (MAS 1), then the concrete floor would receive an MAS of 3. The MAS for each product in the category is used to multiply by the value of the product and totaled for each product to obtain the Product Category Adjusted Value. If the product category adjusted value divided by the total value of all products in that product category results in a percentage greater than 100%, the project achieves 1 point for this credit. The credit allows for a maximum of 5 points depending on the number of product categories with a product category adjusted value of 100 % or greater.

LEED, or Leadership in Energy & Environmental Design, is the world's most widely used green building rating system, recognizing best-in-class building strategies and practices. The LEED program logo is a globally recognized symbol of excellence in green building.



## CSC Contribution to Multi-Attribute Score (MAS)

CSC Certification provides third-party verification of responsible sourced concrete and contributes to several LEED impact criteria areas or attributes:

### Product Documentation Scores in LEED v5:

Eligible Product Documentation Concrete Sustainability Council	Human Health	Climate Health	Ecosystem Health	Social Health & Equity	Circular Economy	LEED Multi-Attribute Score (max = 5)
Concrete Plant Certification, Bronze	-	-	-	1	-	1
Concrete Plant Certification, Silver	-	-	1	1	-	2
Concrete Plant Certification, Gold or Platinum	-	-	1	2	-	3
Concrete Mix with CO <sub>2</sub> Module Score of 1 Star	-	1	-	-	-	1
Concrete Mix with CO <sub>2</sub> Module Score of 2, 3, or 4 Stars	-	2	-	-	-	2

**Result:** CSC-certified concrete supports **multi-category performance**, increasing the product's Multi-Attribute Score (MAS).

### Concrete supplied from CSC-certified plants contributes to several sustainability criteria:

CSC Bronze Certification: MAS 1

CSC Silver Certification: MAS 2

CSC Gold or Platinum certification: MAS 3

Concrete mixes including the CSC CO<sub>2</sub> Module provide additional climate-related scoring:

CO<sub>2</sub> Module-1 Star: MAS 1

CO<sub>2</sub> Module-2-4 Star: MAS 2

These scores can be combined. For example, a concrete from a plant that is CSC Silver Certified and has CO<sub>2</sub> Module-1 Star, would have a MAS of 3.



### Key Value

- Supports multiple LEED impact categories through one certification
- Increases project-level Multi-Attribute Score (MAS) in LEED v5
- Aligns with LEED v5 and ESG requirements
- Enhances the value of concrete in sustainable projects

### Conclusion

CSC Certification provides a **credible, multi-attribute solution** aligned with LEED v5, enabling concrete to contribute effectively to project sustainability performance and certification outcomes.

The Concrete Sustainability Council (CSC) is the leading global certification system for responsible sourcing in the concrete sector.

### Impact on LEED v5 Score for MRc4

Total LEED v5 points	110
MR Credit 4 (BPSP)	Up to 5 points
Contribution enabled by CSC	<b>Up to ~ 4.5 % of total score</b>

CSC enables concrete to act as a **measurable contributor** to LEED certification outcomes. Although it is rare for concrete to be considered an interior or envelope material, there are cases where exposed concrete floors, walls and ceilings could participate. It is more likely that concrete would participate in the Multi-Attribute Structure, Enclosure, Hardscape and Other Building Materials Credit, MRpc181.

### MRpc181 – Multi-Attribute Structure, Enclosure, Hardscape, and Other Building Materials

In addition to MR Credit 4, MRpc182 offers an alternative pathway using the same Multi-Attribute Score (MAS) approach, which can enable more direct point contributions from CSC-certified concrete, particularly when multiple mixes achieve MAS 3 or higher.

Through this credit, **CSC-certified concrete can contribute to LEED v5 projects when used for structure, enclosure and hardscapes**, enabling project teams to recognize responsible sourcing and carbon transparency in concrete. Projects can achieve up to two LEED points through this pathway. The project is awarded 1 point if 15 materials have a MAS of 3 or greater and 2 points if 30 materials have an MAS of 3 or greater. Since multiple concrete mixtures are typically used on projects, each can contribute to this credit, provided their MAS is 3 or greater, up to a maximum of 10 products (mixtures).

**This means that CSC-certified concrete mixes achieving MAS ≥3 (e.g. CSC Gold/Platinum or CSC Silver with CO<sub>2</sub> Module) can each count toward this threshold, allowing concrete to represent a significant share of the required materials.**